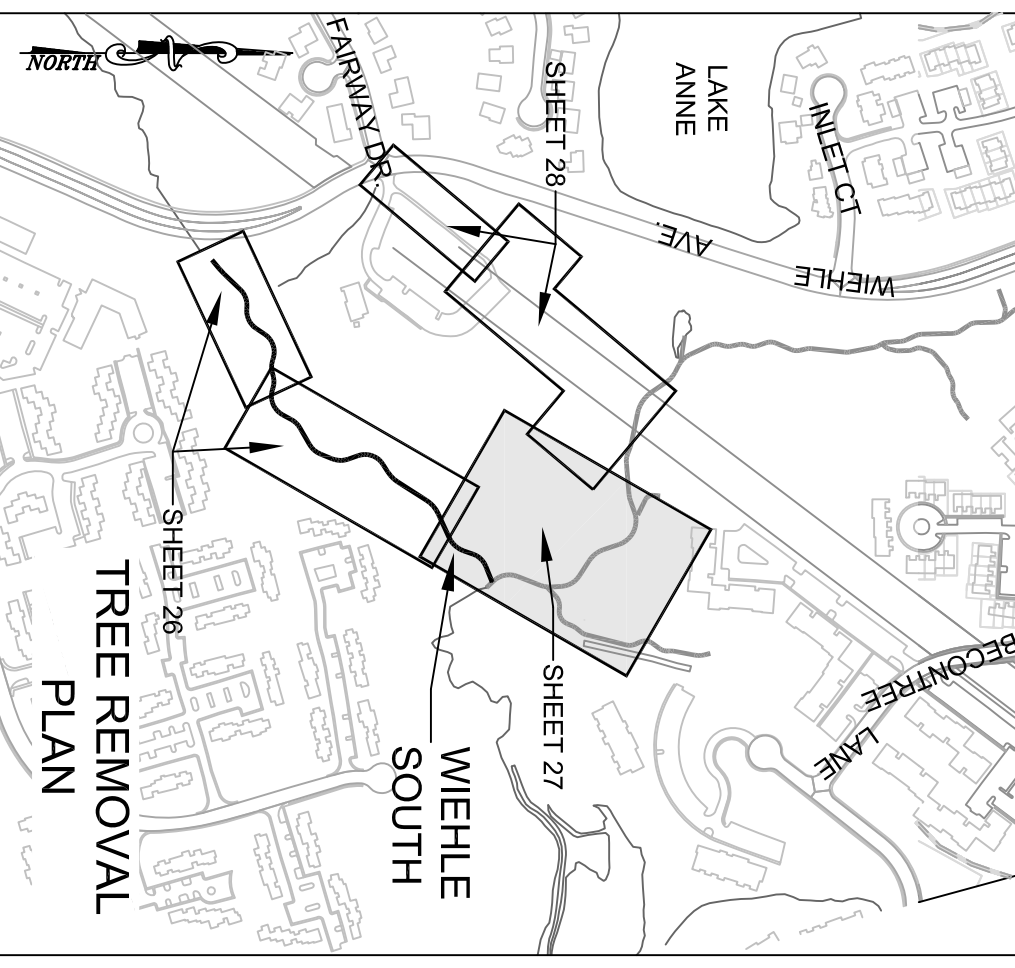
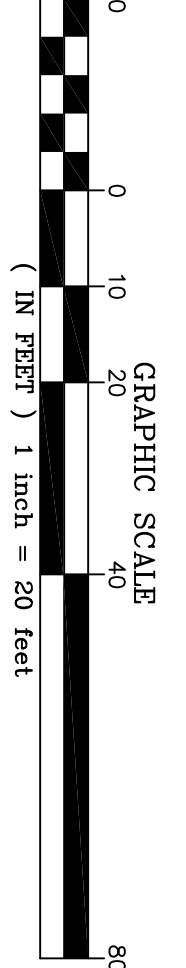


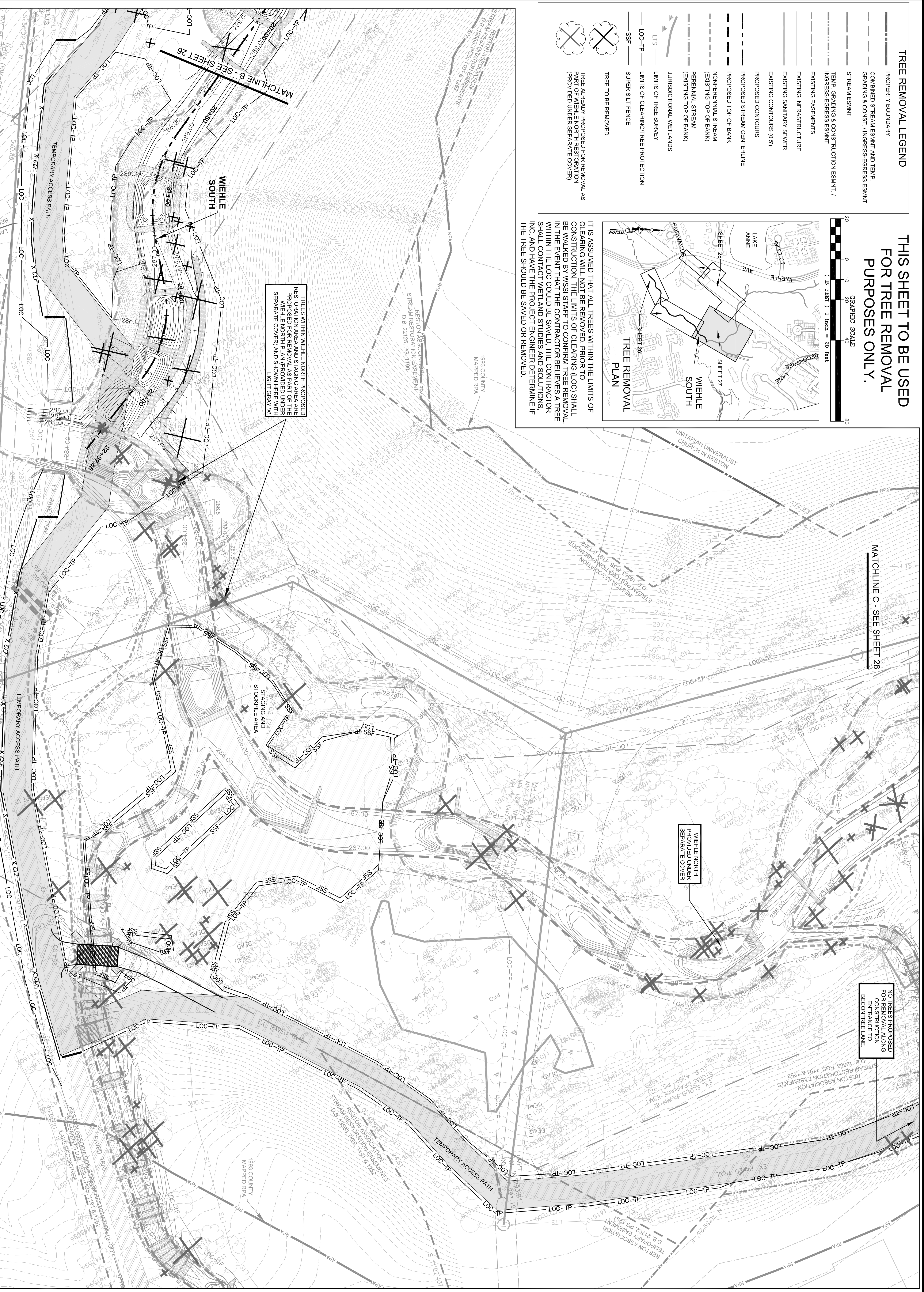
THIS SHEET TO BE USED FOR TREE REMOVAL PURPOSES ONLY.



TREE REMOVAL LEGEND

- PROPERTY BOUNDARY
- COMBINED STREAM ESMNT AND TEMP. GRADING & CONST. / INGRESS-EGRESS ESMNT
- STREAM ESMNT
- TEMP. GRADING & CONSTRUCTION ESMNT. / INGRESS-EGRESS ESMNT
- EXISTING EASEMENTS
- EXISTING INFRASTRUCTURE
- EXISTING SANITARY SEWER
- EXISTING CONTOURS (0.5')
- PROPOSED CONTOURS
- PROPOSED STREAM CENTERLINE
- PROPOSED TOP OF BANK
- NONPERENNIAL STREAM (EXISTING TOP OF BANK)
- PERENNIAL STREAM (EXISTING TOP OF BANK)
- JURISDICTIONAL WETLANDS
- LIMITS OF TREE SURVEY
- LOC-TP --- LIMITS OF CLEARING/TREE PROTECTION
- SSF --- SUPER SILT FENCE
- TREE TO BE REMOVED
- TREE ALREADY PROPOSED FOR REMOVAL AS PART OF UNDER SEPARATE COVER (PROVIDED UNDER SEPARATE COVER)

IT IS ASSUMED THAT ALL TREES WITHIN THE LIMITS OF CLEARING WILL NOT BE REMOVED. PRIOR TO CONSTRUCTION, THE LIMITS OF CLEARING (LOC) SHALL BE WALKED BY WSSI STAFF TO CONFIRM TREE REMOVAL. IN THE EVENT THAT THE CONTRACTOR BELIEVES A TREE WITHIN THE LOC COULD BE SAVED, THE CONTRACTOR SHALL CONTACT WETLAND STUDIES AND SOLUTIONS, INC. AND HAVE THE PROJECT ENGINEER DETERMINE IF THE TREE SHOULD BE SAVED OR REMOVED.



TREES WITHIN WIEHLE NORTH PROPOSED RESTORATION AREA AND STAGING AREA ARE PROPOSED FOR REMOVAL AS PART OF THE WIEHLE NORTH PLAN PROVIDED UNDER SEPARATE COVER AND SHOWN HERE WITH LIGHT GRAY 'X'.

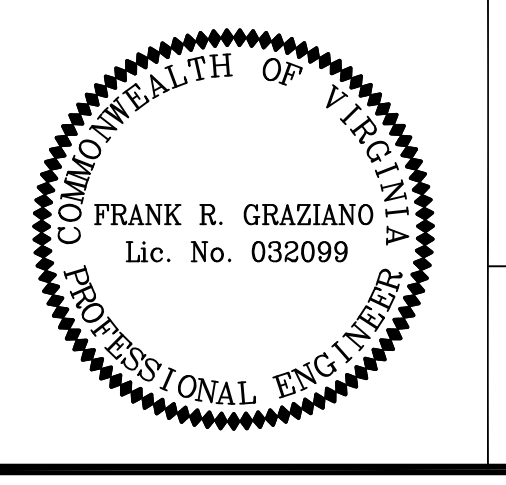
REVISIONS

No.	Date	Description	Rev. By	App. By

Horizontal Datum: VCS NAD 83
Vertical Datum: NGVD 29
Boundary and Topo Source: WSSI and Fairfax Digital Data

Design	Date	Approved
KLP	KLP	FRG

DATE: AUGUST 2012 SCALE: 1" = 20'



Northern Virginia Stream Restoration Bank
Colvin Run - Wiehle South
Fairfax County, Virginia

Tree Removal Plan (cont'd)

Copyright © 2012 Wetland Studies and Solutions, Inc.

5300 Wellington Branch Drive, Suite 100 • Gainesville, VA 20155
Phone 703 679 5600 • Fax 703 679 5601
wetlandstudies.com